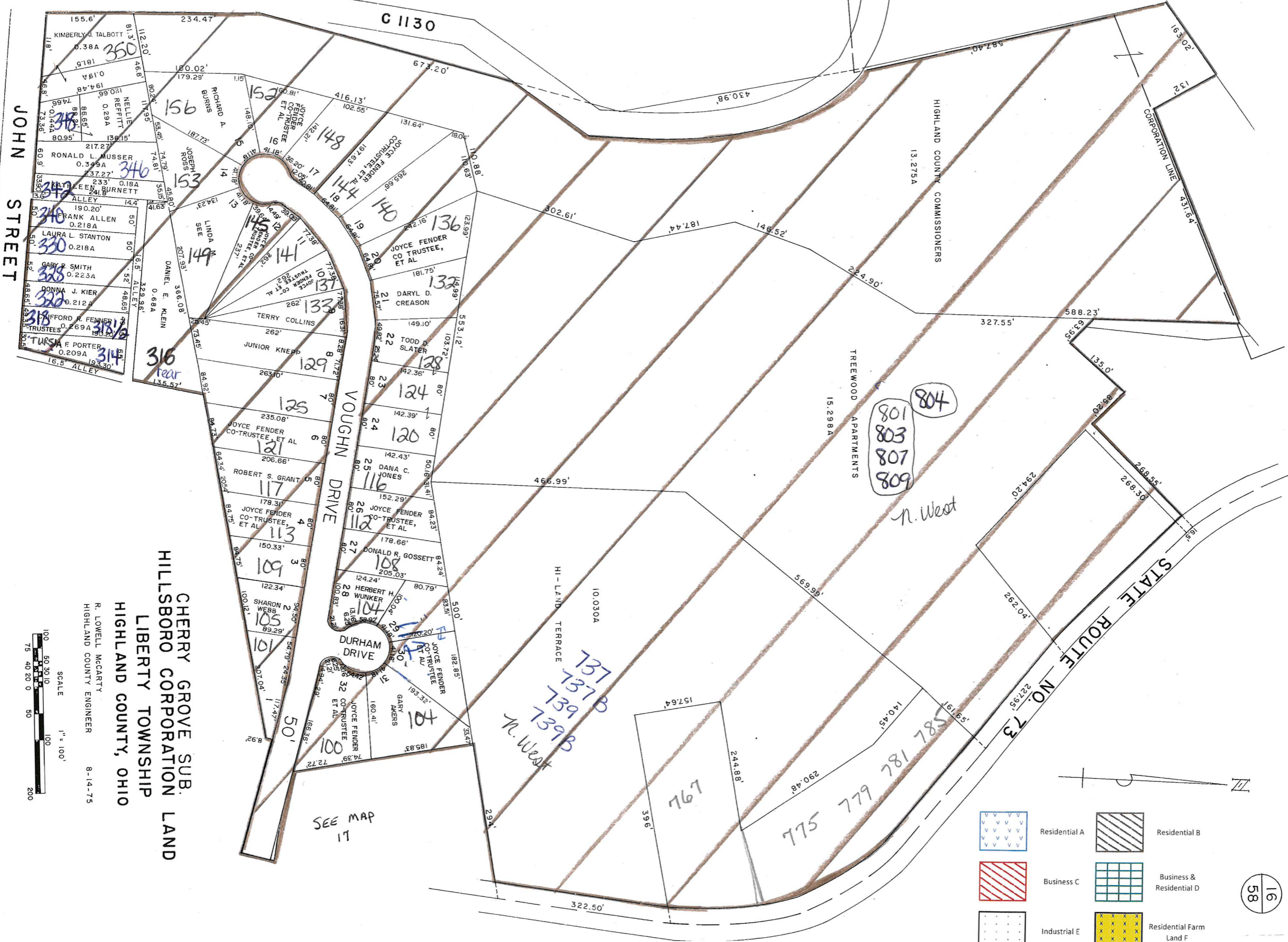


JOHN STREET

C 1130



CHERRY GROVE SUB.
 HILLSBORO CORPORATION LAND
 LIBERTY TOWNSHIP
 HIGHLAND COUNTY, OHIO

R. LOWELL MCCARTY
 HIGHLAND COUNTY ENGINEER
 8-14-75



SEE MAP 17

801
803
807
809

n. West

737
737B
739
739B
n. West

